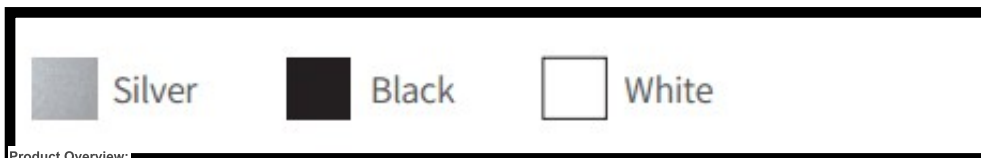

SJ-ALP8016 Architectural LED Profile for wall foot line

Our advantages:

1. The extrusion is made from **high quality Aviation 6063-T5 aluminum alloy** with Double-Anodized;
2. **Covers are made of polycarbonate** and certified for excellent resistance to all weather conditions and UV radiation, as well as being flame retardant.
3. Factory Price / Short delivery time / Best Service.

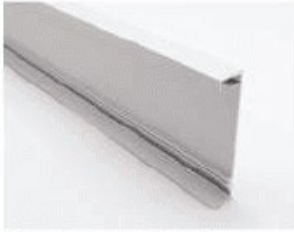
Product details:



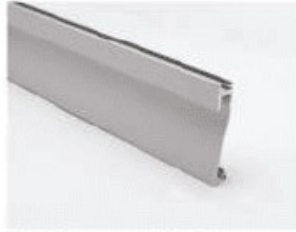
Product Overview:

Model	ALP8016 LED Aluminum Extrusion
Material	6063 T5 Aluminum Alloy
Finished	Anodized
Length	0.5m, 1.0m, 1.5m, 2.0m, 2.5m, 3.0m
Inside Width For Strip PCB	Max 10.3mm
Delivery Time	3-7days
Package	Inner PP Bag, Outer Carton package
Warranty	2 years No Fading, No Rusting

Related Items:



Aluminum profile 1



Aluminum profile 2



PC Frosted cover



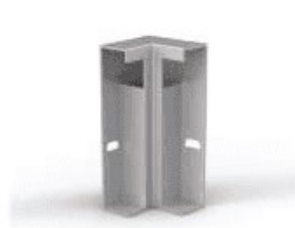
End cap with hole
End cap without hole



LED Strip: 3528LED
120LEDs/M, 9.6W/M



LED Driver

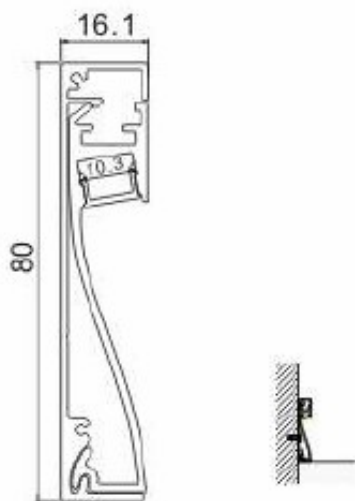


90 degrees inside
connector

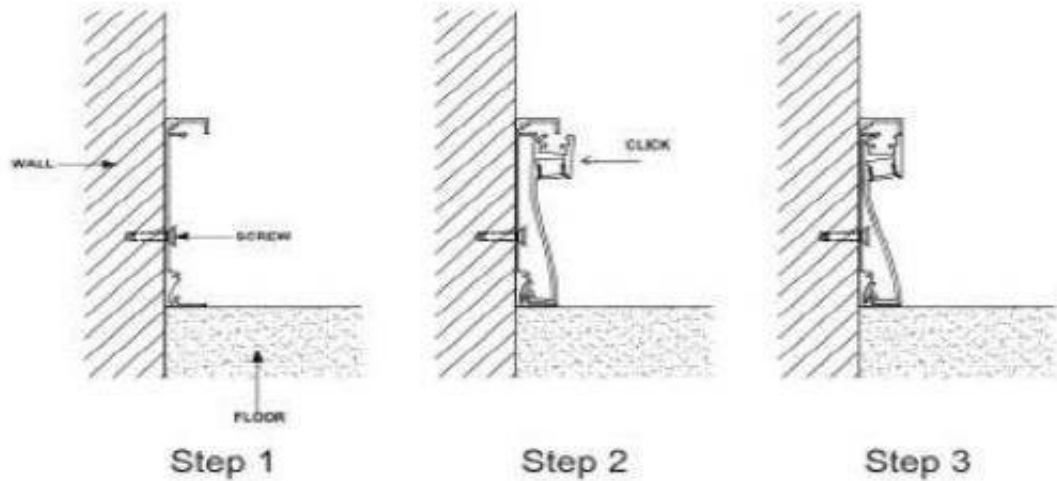


90 degrees outside
connector

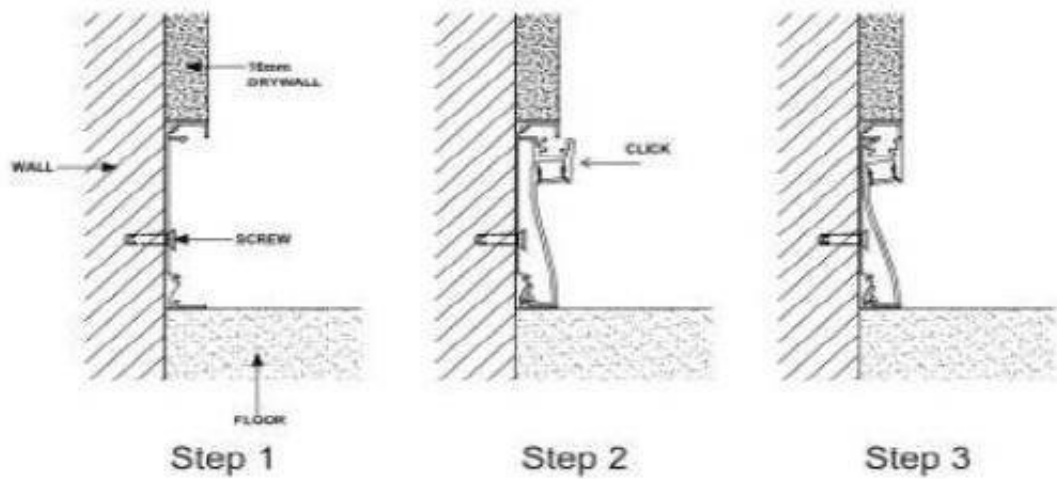
Dimension Drawing:



A



B



-Free samples are available, welcome samples testing;

-Full solution can be offered, just let us know your demands;

-2 Years Warranty, free replacement can be offered for problem products during our warranty time.