

Din Rail 2 in 1 LED controller (Zigbee 3.0 + 2.4G)

Model No.:TZ2

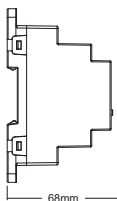
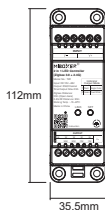
Features

- Zigbee 3.0 + 2.4Ghz wireless transmitting
- Compatible with standard 35mm universal rail
- Brightness adjustable
- Auto-forwarding: Automatically forward the remote control signal to another controller, making the remote control distance infinite
- Have DND function, usually used in power failure area and save power
- Support TUYA SMART app control (Zigbee 3.0 gateway is needed)
- Support third party voice control like Alexa, Google assistant, Yandex Alice, Tmall Genie, Baidu and Xiaomi (Zigbee 3.0 gateway is needed)



Parameters

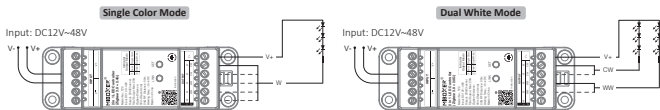
Name: Din Rail 2 in 1 LED controller	Working Temperature:	-10~40°C
Model No.: TZ2	EMC Standard (EMC):	ETSI EN 301 489-1 V2.2.3(2019-11) ETSI EN 301 489-3 V2.3.2 (2023-01)
Input Voltage: DC12~48V		
Output Current: 20A/ Single channel	Safety Standard (LVD):	EN 61347-1: 2015+A1:2021 EN 61347-2-11: 2001+A1:2019
Total Output: Max 20A		
Protocol: Zigbee 3.0 + 2.4G	Radio Equipment (RED):	ETSI EN 300 328 V2.2.2 (2019-07)
Control Distance: Zigbee: 50m (Open Area) RF: 30m	Certification:	CE, EMC, LVD, RED
IP Rating: IP20		



DIN-Rail mounting size:
TS-35/7.5 or TS-35/15
(Purchasing separately)



Connection Diagram



Setting Output Mode

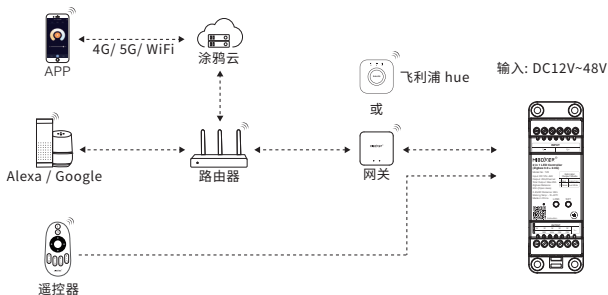
Output mode is related with connected led lights

Solution: short press " SET " to switch mode (attention: it will step out automatically without any operation within 3 seconds)



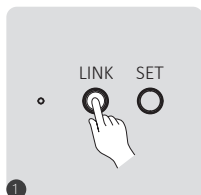
Indicator Output Mode		
1	Red	Single Color
2	Green	Dual White

Application Diagram

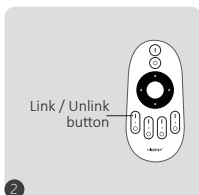


2.4G RF Remote control instruction

Linking Code Instructions



1 Short press "Link" button once



2 Short press " 1 " button 3 times within 3 seconds.

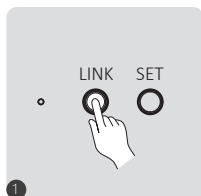


3 Lights blink 3 times slowly means linking is done successfully.



Linking failed if light is not blinking slowly, Please follow above steps again. (Note: Light that have linked can't link again)

Unlinking Code Instructions



1 Short press "Link" button once



2 Short press " 1 " button 5 times within 3 seconds.



3 Lights blink 10 times quickly means unlinking is done successfully.



Unlinking failed if light is not blinking quickly, Please follow above steps again. (Note: Light haven't linked that don't need to unlink)

Compatible with these 2.4G RF remote controls (Purchased separately)



C2



C3



FUT006



FUT007



B1 / B1-B / T1



B2 / T2



K1 / K1-B



K2 / K2-B



FUT087
FUT087-B



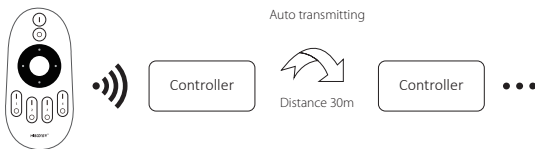
S1-B / S1-W
S1-G



WL-Box2

Transmitting function instruction

One Controller can transmit the signals from the remote control to another Controller within 30m, as long as there is a LED Driver within 30m, the remote control distance can be limitless.



Attention: All "LED Driver" must be linked with one remote.

Turn Do Not Disturb mode on and off (ON by default)

Turn on "Do Not Disturb" (applicable to areas with frequent power outages to save energy)

Turn on Do Not Disturb mode:

Short press the "OFF" button 3 times within 3 seconds, and then short press the "ON" button 3 times. The light flashes 4 times to indicate success.

Note: When the lamp is powered on again after a power outage, its status (lights on or off) will remain the same as before the power outage.

Turn off Do Not Disturb mode:

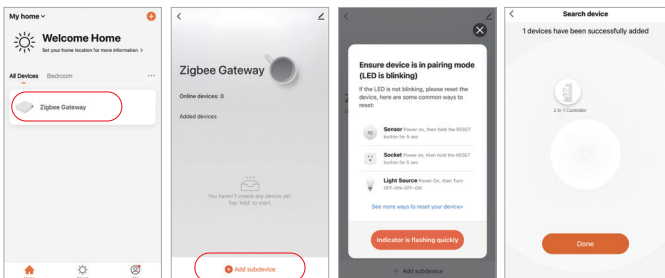
Short press the "ON" button 3 times within 3 seconds, and then short press the "OFF" button 3 times. The light flashes 4 times slowly to indicate successful shutdown.

Note: When the lamp is powered on again after a power outage, its status will be on by default.

Smartphone APP control instruction

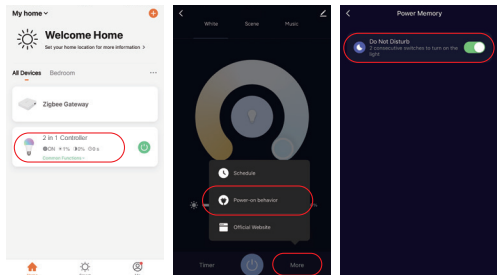
Added Zigbee 3.0 gateway into "Tuya Smart" App (please review instruction of Zigbee 3.0 gateway)

- 1). Connect with power supply.
- 2). Pairing network (**attention: factory default is pairing network**).
Way one: Turn off and turn on light 6 times or over 6 times continuously, the light is in breathing status.
Way two: Long press " LINK " key until indicator light flashing.
- 3). Open "Tuya Smart" APP to click Zigbee gateway, then click "Add sub device".
- 4). Click "Indicator is flashing quickly".
- 5). Support APP dimming or group control and etc once added successfully.



App turn on and off "Do Not Disturb" mode (default activated)

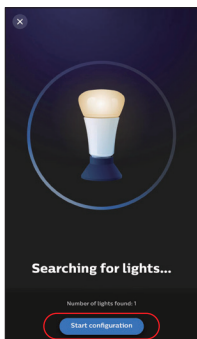
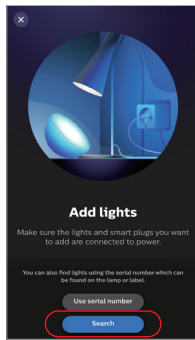
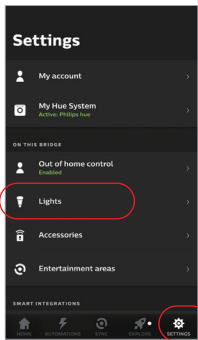
Click the light which need to be set up or group control --- click "More" --- click "Power-on behavior" --- turn on or off



Philips Hue control instruction

Added "Philips Hue" into APP

- 1). Connect with power supply
- 2). Pairing network (**attention: factory default is pairing network**)
Way one: Turn off and turn on light 6 times or over 6 times continuously, the light is in breathing status.
Way two: Long press " SET " key until indicator light flashing.
- 3). Open "Philips Hue" App to click "SETTINGS" and click "Lights"
- 4). Click "+" on the top of right corner
- 5). Click "Search"
- 6). Click "Start configuration", Follow the app instruction to complete configuration



Alexa voice control instruction

1). Alexa control (Audio support Zigbee 3.0 protocol)

You can connect directly if your Amazon ECHO already is built-in zigbee 3.0 protocol, following model with zigbee 3.0 protocol:

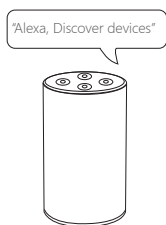
Amazon ECHO Plus (2nd Gen), ECHO (4th Gen), ECHO Studio, ECHO Show (2. Gen)

- 1). Connect with power supply
- 2). Pairing network (**attention: factory default is pairing network**)

Way one: Turn off and turn on light 6 times or over 6 times continuously, the light is in breathing status.

Way two: Long press " SET " key until indicator light flashing.

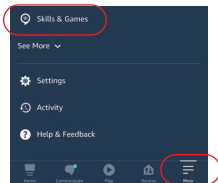
- 3). Say to Amazon ECHO "Alexa, Discover devices"
Wait for a while to discover device, Voice control is activated



2). Alexa control (Audio don't support Zigbee 3.0 protocol)

Please add device into Miboxer Zigbee 3.0 gateway if your Alexa don't support zigbee 3.0 protocol , then start following steps

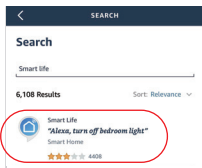
- 1). Open Alexa App
- 2). Click "More" on the bottom of right corner
- 3). Click "Skills & Games"



- 4). Click "Q" on the top of right corner
- 5). Type into "Smart life" and search



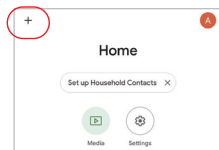
- 6). Click "Smart Life" skill, follow instruction to finish configuration and start voice control



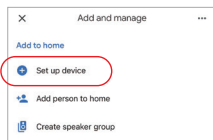
Google Home voice control instruction

Please add device into MiBoxer Zigbee 3.0 gateway ([check details in page 6](#)) and start following steps

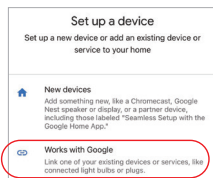
- 1). Open Google Home App
- 2). Click "+" on the top of left corner



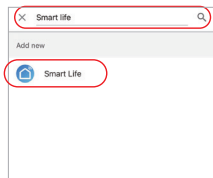
- 3). Click "Set up device"



- 4). Click "Works with Google"



- 5). Click "Q" on the top of right corner
- 6). Type into "Smart life" and search
- 7). Click "Smart Life" skill, follow instruction to finish configuration and start voice control



Notice

1. Please check whether the voltage of the power supply is in accordance with the light, and please check the connection of both the cathode and anode, otherwise the light will be broken.
2. Please don't connect wires with power on. Please turn on again only when it is in right connection and no short circuit.
3. Non-professional user cannot dismantle the lighting fixtures directly.
4. Please do not use the light in the place with widely range metal area or strong electromagnetic wave nearby, otherwise, the remote distance will be seriously affected.

Made in China



Dimmer can not
use in humid area